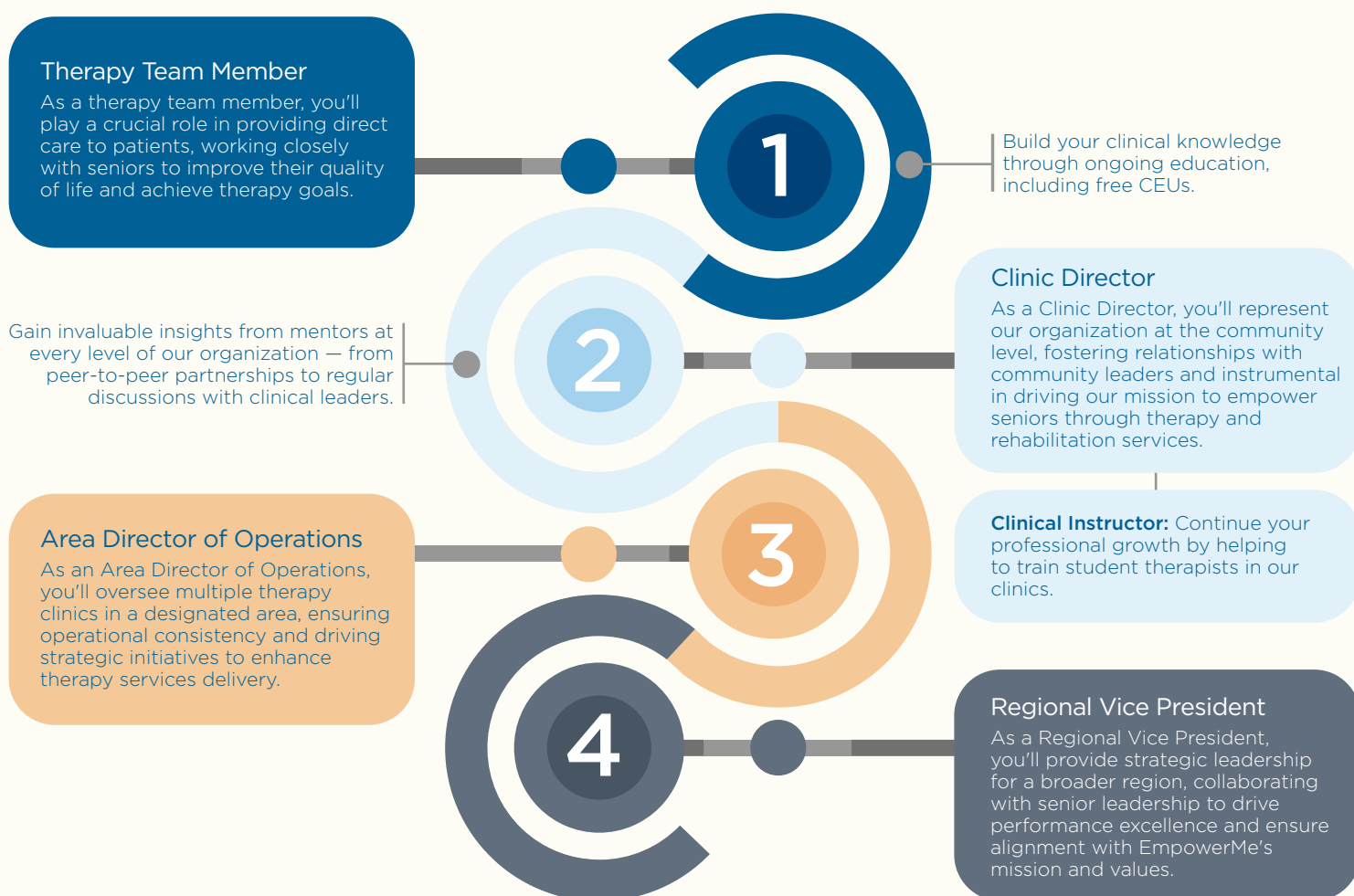


Careers Built for Growth



We are here to support you in your professional goals. While we know every professional path is unique, here's one example of what a professional growth path at EmpowerMe could look like.



EmpowerMe Wellness Core Values

We're revolutionizing senior care standards. At EmpowerMe, we've cultivated a thriving and motivating workplace where team members thrive and advance in their careers. Our foundation rests on seven core values:



Alignment

We create unique paths to shared goals.

In our business, it is essential to have a foundation of mutual understanding and agreement. We ensure this alignment exists universally, so we can collaborate effectively and succeed at our Mission.



Audacity and Bravery

We tackle enormous challenges.

We are professional superheroes who have the power to walk into any situation and make it better than we found it.



Fierce Intellectual Curiosity

We value the discovery of truth.

This shows in the energy we put towards listening, exploring, and creating the best solutions for communities and individuals. It's also evident in how freely we share information, so we can be understood ourselves.



We Have Fun!

We spread happiness.

Part of being healthy is pursuing happiness. We come to work with a sense of humor, a ready smile, and a positive perspective.



Long-Term Focus

We always look ahead.

We are dedicated to investing in people, building for tomorrow, and focusing on our Mission.



Servant Leadership

Lead with service.

We apply our unique strengths to look out for the seniors we serve, as well as each other.



Relentless Drive

We are an unwavering force for good.

Each day brings new ways to improve life for those we serve, and we are determined to make the most of every opportunity.

We're hiring nationwide!



careers.empowerme.com



careers@empowerme.com